



**Cu**  
COPPER

**Au**  
GOLD

VCU.TSXV VCUFF.OTCQB

## WOODJAM: ADVANCING BC'S NEXT GREAT CU-AU PROJECT

Vizsla Copper is a Cu-Au-Mo focused mineral exploration and development company focused on its flagship Woodjam project located within the prolific Quesnel Terrane, British Columbia. It has four additional copper exploration properties; Copperview, Redgold, Blueberry and Carruthers Pass, all well situated amongst significant infrastructure in British Columbia.

### HIGHLIGHTS

#### TRANSFORMATIONAL ACQUISITION

Vizsla Copper completed the acquisition the prospective Woodjam property and recently expanded the project with the purchase of additional claims.

#### ATTRACTIVE MARKET OUTLOOK

Solid market fundamentals with continued strong copper demand growth and limited supply in the medium and long-term horizon.

#### EXPERIENCED & PROVEN TEAM

Proven track record in mineral exploration and capital markets.

#### EXPLORING THROUGH A NEW LENS

Past work has only explored a fraction of the 90,163 ha district-scale Woodjam property. 2024 exploration is designed to extend mineralization.

#### BACKSTOPPED IN VALUE

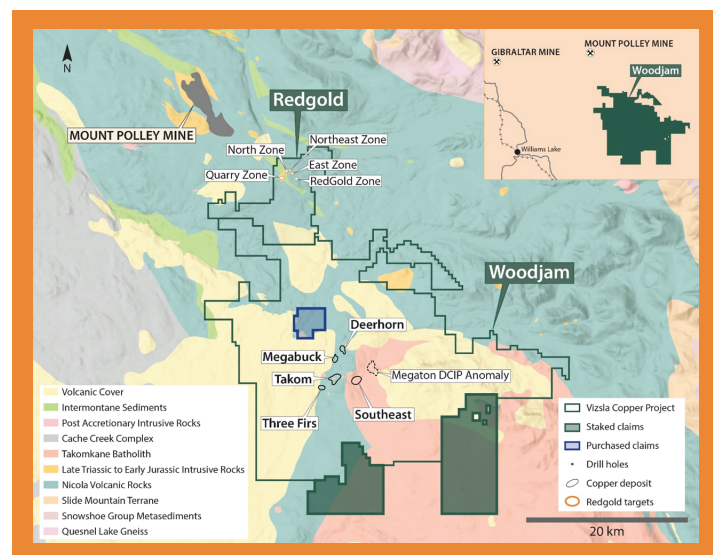
Historical inferred resources of 1.7B lbs Cu and 968k oz Au.

#### CONSIDERABLE UPSIDE

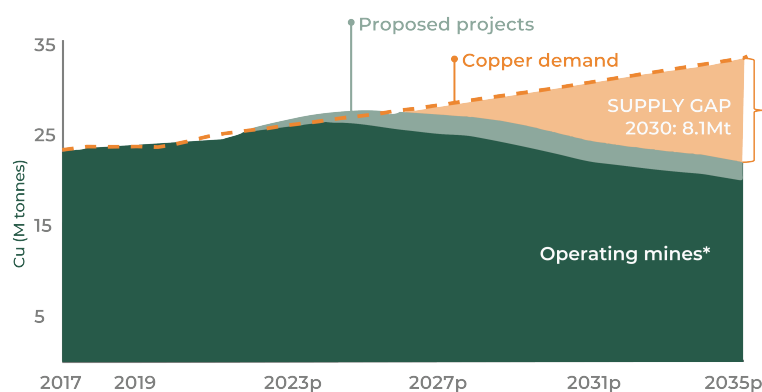
Multiple avenues to re-rate through discovery success.

### 8,000m Drill Program Complete

Assay results include 0.90% copper equivalent over 66.1 m. Identified significant extensions to Deerhorn and Takhom deposits as well as the strongest mineralization to date at Megaton.



#### COPPER SUPPLY VS DEMAND: 2017-2035



## NEXT STEPS

FOLLOW UP ON PAST SUCCESS IN KNOWN DEPOSITS	EXPAND WOODJAM COPPER-GOLD PROJECT	RESOURCE UPGRADE	FIELD WORK	MEGATON DRILLING
Initial drill program: 18 holes in ~8,000m. Assay results included 0.90% copper eq. over 66.1 m. (COMPLETE)	Aquired an additional 16,008 ha of prospective ground contiguous with the project (COMPLETE)	Update the Woodjam Project mineral resource inclusive of all drilling from 2013 onwards (IN PROGRESS)	Conduct field work at Woodjam, including newly aquired claims (COMING SOON)	2023 exploration provided strong indications that Megaton is another porphyry centre at Woodjam (COMING SOON)

## WHY VIZSLA COPPER?



### COMMODITY

Industry experts are predicting a commodity super cycle with copper having the strongest fundamentals.



### PROJECT

Well-located vastly underexplored high-grade Cu-Au porphyry project in the Tier 1 mining district of British Columbia, Canada.



### TEAM

Vizsla Copper's team has a history of discovery and significant value creation.

## THE COMPANY

### OUR BOARD

Craig Parry, Executive Chairman  
Chris Donaldson, CEO & Director  
Michael Konnert, Director  
Simon Cmrlec, Director  
Karlene Collier, Director

### OUR TEAM

Steve Blower, VP Exploration  
Grant Tanaka, CFO  
Keith Bodnarchuk, Corporate Development  
Dr. Chris Leslie, Senior Technical Advisor

### CAPITAL STRUCTURE

Shares Outstanding	107,654,365
Warrants	9,043,111
Options	10,037,668
Shares Fully Diluted	126,735,144
Share Price (Jan.19/24)	C\$0.11
Market Cap (Jan.19/24)	C\$11.8 M
Cash (Oct. 31/23)	C\$1.6 M

*"Copper is an incredibly efficient conductor of electricity and heat, making it vital for nearly every piece of infrastructure or electrical device from cables to generators to electric engines. It is used across industries in everything from cars to aircraft to computers. This unmatched utility has helped increase supply and demand."*

Ariel Cohen, Forbes

